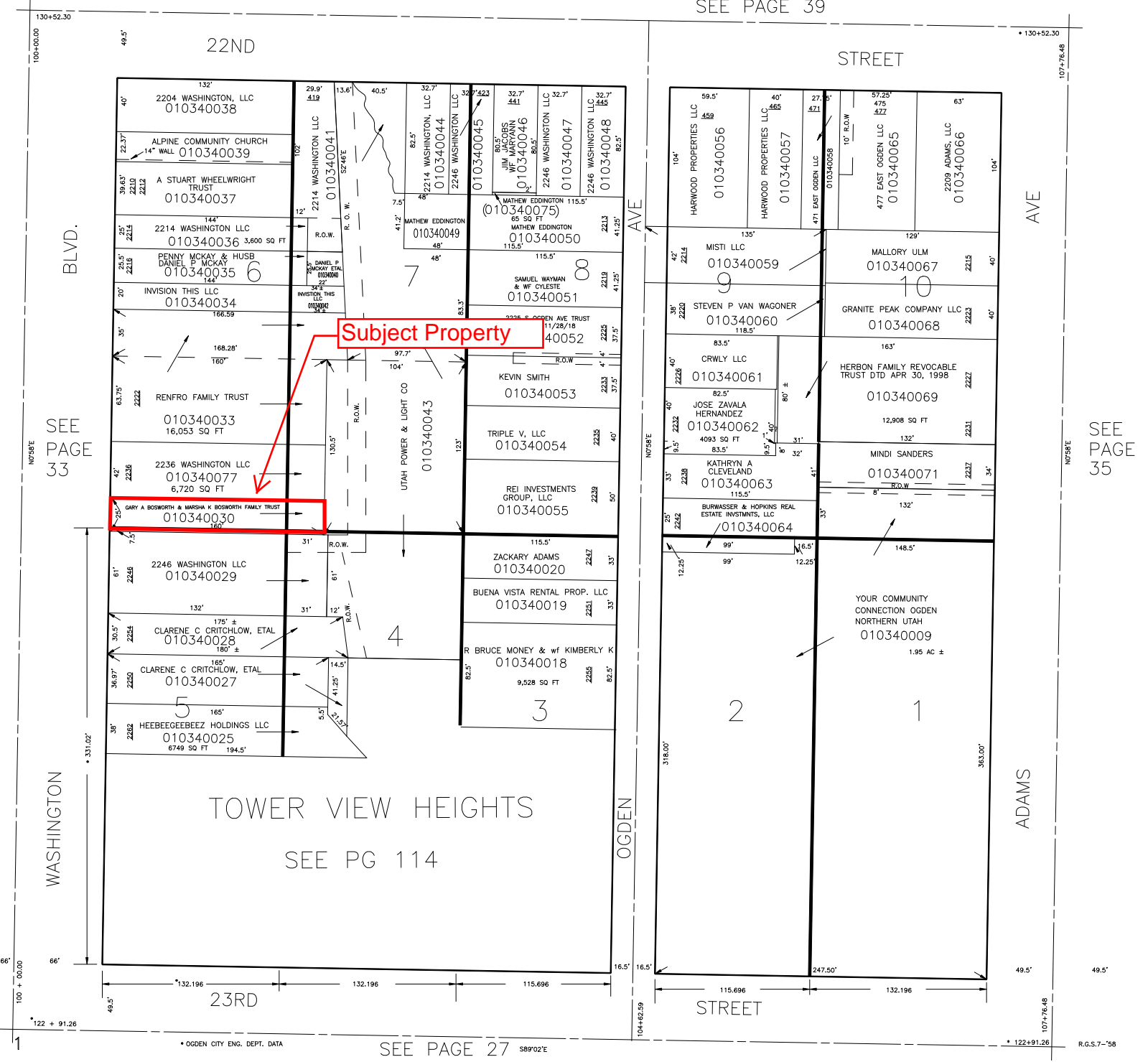


BLOCK 40 PLAT A

TAXING UNIT: 482

IN OGDEN CITY
SCALE: 1" = 50'

SEE PAGE 39



Subject Property

TOWER VIEW HEIGHTS
SEE PG 114

SEE PAGE 27 S89'02"E

SEE PAGE 35

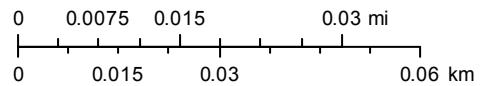
R.G.S.7-'58

ArcGIS Web Map



June 28, 2019


1:1,128



City Boundaries

Street Labels

Parcel Address

 Parcels

World Transportation

Esri, HERE, Garmin, (c) OpenStreetMap contributors
Source: Esri, DigitalGlobe, GeoEye, Earthstar Geographics, CNES/Airbus
DS, USDA, USGS, AeroGRID, IGN, and the GIS User Community