

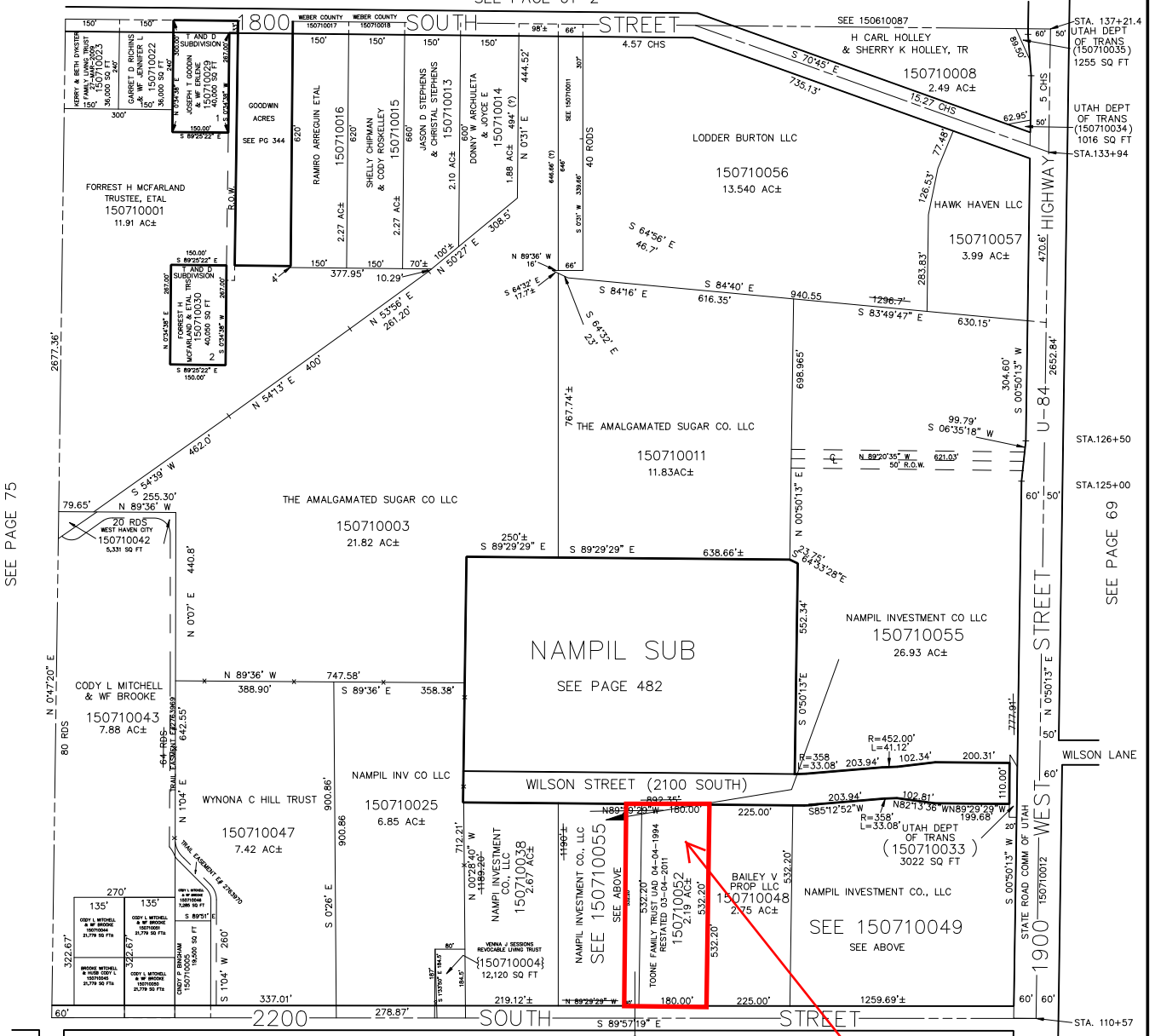
N.E. 1/4
SECTION 26, T.6N., R.2W., S.L.B. & M.

IN WEST HAVEN CITY

SCALE 1" = 200'

SEE PAGE 61-2

TAXING UNIT: 277



SEE PAGE 75

SEE PAGE 69

SEE PAGE 72

NOTE: BEARINGS & DISTANCES FOR SECTION LINES DETERMINED BY STATE PLANE COORDINATES RECEIVED FROM WEBER COUNTY SURVEYOR'S OFFICE.

15-071-0052 = +/- 95,396.40 SF
 15-071-0054 = +/- 21,288 SF
 TOTAL = +/- 116,684.40 SF = +/- 2.68 Acres

Subject Property

ArcGIS Web Map



August 7, 2019

City Boundaries

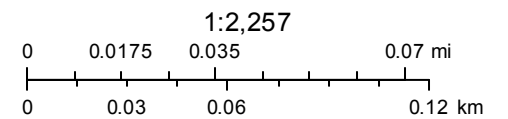


Parcels

Street Labels

World Transportation

Parcel Address



Esri, HERE, Garmin, (c) OpenStreetMap contributors
Source: Esri, DigitalGlobe, GeoEye, Earthstar Geographics, CNES/Airbus