

13

039

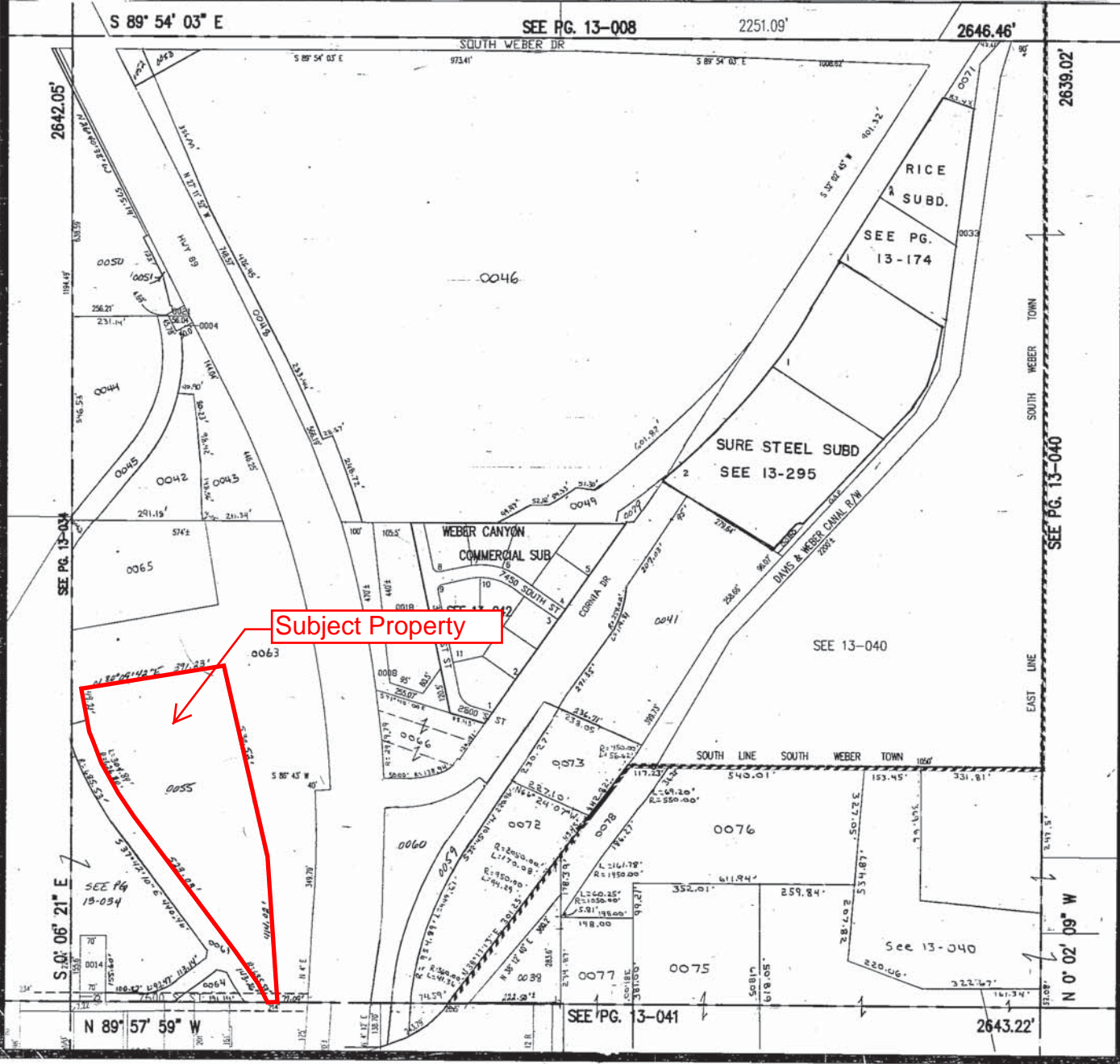
PID	OWNER	ACRE	PID	OWNER	ACRE	PID	OWNER	ACRE	PID	OWNER	ACRE
0004	UTAH STATE ROAD COMMISSION	.037	0021	UTAH STATE ROAD COMMISSION	.021	0049	UT DEPARTMENT OF TRANSPORTATION	1.00	0065	UT DEPARTMENT OF TRANSPORTATION	2.24
0008	UTAH DEPT. OF TRANSPORTATION	1.191	0023	UTAH STATE ROAD COMMISSION	.070	0050	JACK B. DORSON COMPANIES	2.097	0066	UT DEPARTMENT OF TRANSPORTATION	.989
0010	UTAH STATE ROAD COMMISSION	.810	0024	UTAH STATE ROAD COMMISSION	.130	0051	UT DEPARTMENT OF TRANSPORTATION	.18	0071	United States of America	.2053
0012	UTAH STATE ROAD COMMISSION	.870	0025	UTAH STATE ROAD COMMISSION	.060	0052	UT DEPARTMENT OF TRANSPORTATION	.13	0072	Winn Family LP	2.128
0014	Shake A Schreffels	.250	0033	DAVIS WEBER CANAL CO	1.300	0053	UT DEPARTMENT OF TRANSPORTATION	.14	0073	Dustin Pitt Petty	1.221
0015	UTAH STATE ROAD COMMISSION	8.070	0038	DANIELS, TINA	.724	0055	South Weber Development Partners, LLC	5.565	0075	Ray, Douglas Harold - TRS	4.87
0018	UTAH DEPT. OF TRANSPORTATION	1.273	0041	X Marks the Spot Investment LLC	3.74				0076	Patty, William P JR - TRS	5.18
			0043	UT DEPT OF TRANSPORTATION	1.193				0077	Smith, Edwin S - TRS	1.164
			0045	UT DEPT OF TRANSPORTATION	1.63				0078	Davis & Weber Counties Canal	.94
			0044	UT DEPT OF TRANSPORTATION	2.18				0079	Utah Department of Transportation	.099
			0045	UT DEPT OF TRANSPORTATION	.92				0080	NS Group Holdings LLC	.032
			0046	GUYANA ROCK PRODUCTS INC	41.19						
			0048	UT DEPARTMENT OF TRANSPORTATION	1.29						

PREFIX 13  
13-039

LAST #

N

SCALE:  
1" = 200'



NW SECTION 36 T 5N R 1W. SALT LAKE MERIDIAN  
DAVIS COUNTY, UTAH - RECORDERS OFFICE

1-94



Subject Property

13-039-0055  
+/- 5.57 Acres